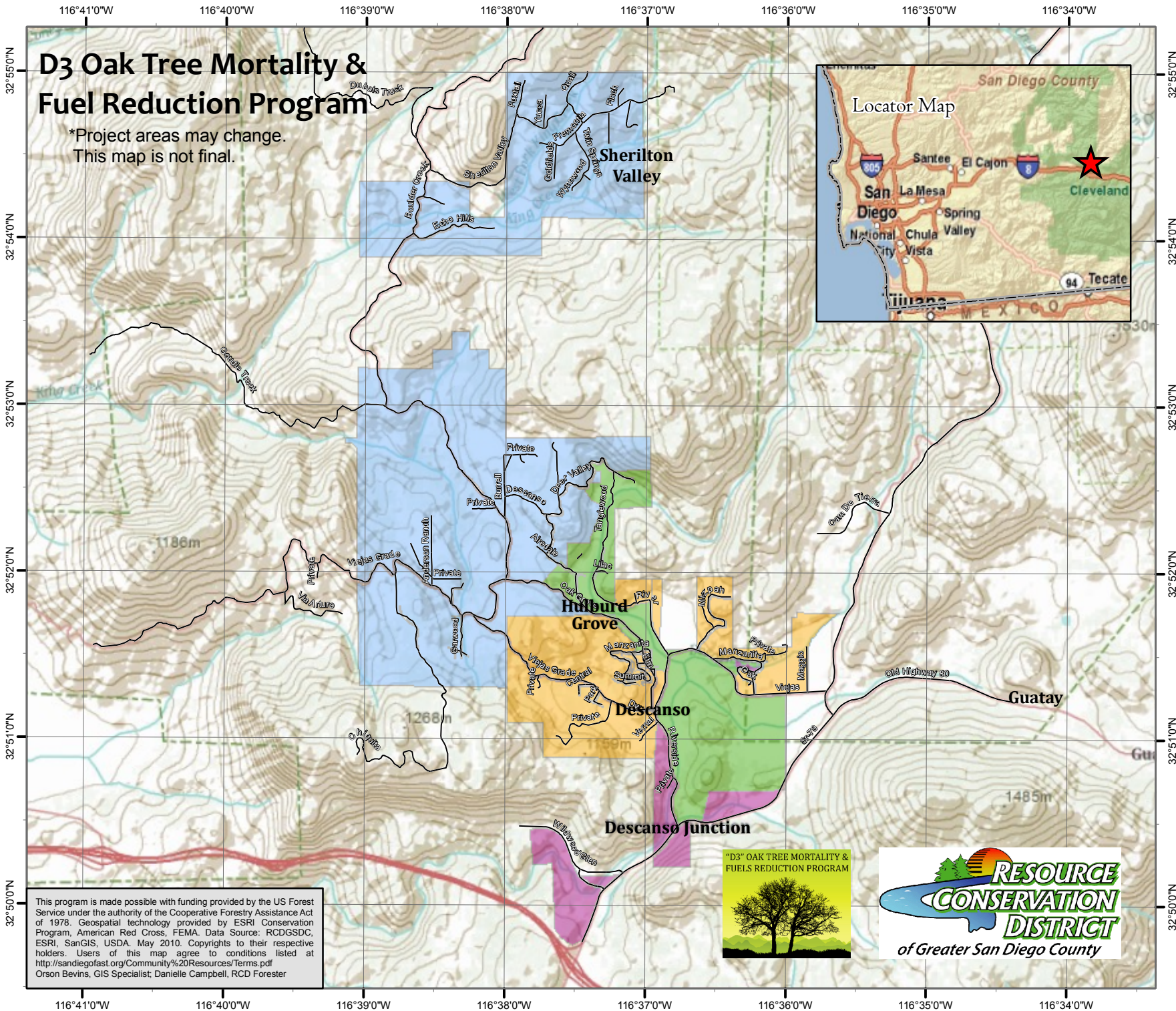


D3 Oak Tree Mortality & Fuel Reduction Program

*Project areas may change.
This map is not final.



PROJECT PHASING MAP



This program is made possible with funding provided by the US Forest Service under the authority of the Cooperative Forestry Assistance Act of 1978. Geospatial technology provided by ESRI Conservation Program, American Red Cross, FEMA. Data Source: RCDGSDC, ESRI, SanGIS, USDA, May 2010. Copyrights to their respective holders. Users of this map agree to conditions listed at <http://sandiegofast.org/Community%20Resources/Terms.pdf>
Orson Bevins, GIS Specialist; Danielle Campbell, RCD Forester

